



Product Service

# CERTIFICATE

No. Z1 15 06 39801 007

**Holder of Certificate:** Invacare Portugal Lda

 Rua Estrada Velha, 949  
 4465-784 Leça do Balio  
 PORTUGAL

**Production Facility(ies):** 39801

**Certification Mark:**

**Product:** Mobile hoists with sling seats  
**Model(s):** Birdie® / Birdie® Plus / Birdie® Compact

**Parameters:**

hoisting range:	1090 mm - 1265 mm
max load:	150 kg - 180 kg
total length:	1100 mm - 1250 mm
width min. / max.:	520 mm - 1110 mm
height sling hook up min. / max.:	445 mm - 1710 mm

**Remark:**  
 - for additional parameters refer to enclosure

**Tested according to:** ISO 10535:2006  
 IEC 60601-1(ed.3)  
 IEC 60601-1-11(ed.2)  
 IEC 60601-1-6(ed.3)  
 IEC 62366(ed.1);am1

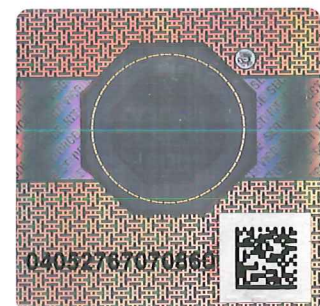
The product was tested on a voluntary basis and complies with the essential requirements. The certification mark shown above can be affixed on the product. It is not permitted to alter the certification mark in any way. In addition the certification holder must not transfer the certificate to third parties. See also notes overleaf.

**Test report no.:** 713049752

**Valid until:** 2020-06-03

**Date,** 2015-06-05  (Torsten Zimmer)

Page 1 of 3





Enclosure to certificate no.: Z1 15 06 39801 007

**Model identification for the mobile hoist**  
**Type: Birdie® / Birdie® Plus / Birdie® Compact**

Birdie with electrical leg spread

type	Birdie
hoisting range	1265 mm
max. load	180kg
total length	1250mm
width min. / max.	640mm / 1110mm
height sling hook up min./ max.	445mm / 1725mm
degree of protection- lifter	IPX4
type of applied part	B
mode of operation	max 10% (2min./18min.)
control unit incl. charger	IN: 100-240Vac / 50/60Hz, 200mA OUT: 24Vdc, 250VA
stroke motor	24Vdc, 7.7A, 10000N
leg spread motor	24Vdc, 2.2A, 750N
front wheel	twin castor Ø 100mm, Ø 75mm
rear wheel	twin castor Ø 100mm, Ø 75mm
turning radius	1400 mm

Birdie with manual leg spread

type	Birdie
hoisting range	1265 mm
max. load	180kg
total length	1250mm
width min. / max.	640mm / 1110mm
height sling hook up min./ max.	445mm / 1725mm
degree of protection- lifter	IPX4
type of applied part	B
mode of operation	max 10% (2min./18min.)
control unit incl. charger	IN: 100-240Vac / 50/60Hz, 200mA OUT: 24Vdc, 250VA
stroke motor	24Vdc, 7.7A, 10000N
front wheel	twin castor Ø 100mm, Ø 75mm
rear wheel	twin castor Ø 100mm, Ø 75mm
turning radius	1400 mm



Enclosure to certificate no.: Z1 15 06 39801 007

**Model identification for the mobile hoist**

**Type: Birdie® / Birdie® Plus / Birdie® Compact**

Birdie Plus with electrical leg spread

type	Birdie Plus
hoisting range	1265 mm
max. load	180kg
total length	1250mm
width min. / max.	640mm / 1110mm
height sling hook up min./ max.	445mm / 1725mm
degree of protection- lifter	IPX4
type of applied part	B
mode of operation	max 10% (2min./18min.)
control unit incl. charger	IN: 100-240Vac / 50/60Hz, 400mA OUT: 24Vdc, 250VA
stroke motor	24Vdc, 10A, 10000N
leg spread motor	24Vdc, 2.2A, 750N
front wheel	twin castor Ø 100mm
rear wheel	twin castor Ø 125mm
turning radius	1400 mm

Birdie Compact with manual leg spread

type	Birdie Compact
hoisting range	1090 mm
max. load	150kg
total length	1100mm
width min. / max.	520mm / 940mm
height sling hook up min./ max.	525mm / 1430mm
degree of protection- lifter	IPX4
type of applied part	B
mode of operation	max 10% (2min./18min.)
control unit incl. charger	IN: 100-240Vac / 50/60Hz, 200mA OUT: 24Vdc, 250VA
stroke motor	24Vdc, 5.5A, 6000N
front wheel	twin castor Ø 100mm, Ø 75mm
rear wheel	twin castor Ø 100mm, Ø 75mm
turning radius	1070mm

Department: MHS5 / xck  
Date: 2015-06-05