

Spare Parts Catalogue

Version: 2016/11/10b NL



DOLOMITE® SYMPHONY



Yes, you can.®

General Information

For any order of spare parts the following information is required:

- Product type*
- Product name & model*
- Serial Number*
- Part-Number*
- Part-Description*

Exploded view drawings and code numbers are not contractual and subject to modification, in relation to Invacare® continuous product improvement policy to meet end users needs.

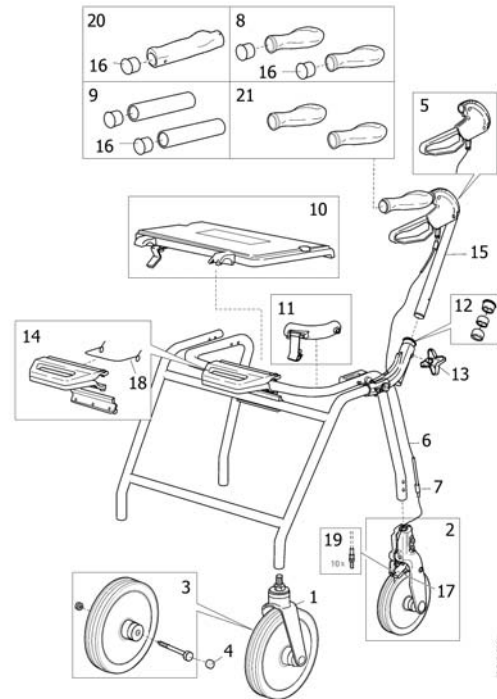
The reproduction or use of this work, or of any substantial part of this work, in any form or by any electronic, mechanical or other means, including photocopying, scanning and recording, and in any information storage and retrieval system, including electronic transmission, is forbidden without the prior written permission of Invacare® International Sarl.



Yes, you can.®

TABLE OF CONTENTS

(Spare parts)	5
(Accessories)	6



	82104	(User manual)		1
	1	13565-25-V01	(Front fork complete with SL II wheel grey)	1
	2	12590-25	Dolomite SLII wheel with rear fork dabs ii	04.01.2001 → 1
	3	12609	Dolomite SLII wiel kit compleet per stuk	1
	4	1452282	Aquatec afdekkap Primo/ Opal2000 sting. (per 20)	1
	5	12619-R	Dolomite remhendel ex. kabel rechts Fut/Symp	1
	5	12619-L	Dolomite remhendel ex. kabel links Fut/Symp	1
	7	SP1529917	(COVER L=565 MM & WIRE 10 PCS (80089)) <i>SYMPHONY 520</i>	1
	7	SP1529918	(COVER L=645 MM & WIRE 10 PCS (80090)) <i>SYMPHONY 600</i>	1
	7	SP1529910	(COVER L=515 MM & WIRE 10 PCS (80088)) <i>SYMPHONY 450</i>	1
	8	12519	Dolomite anatomische pp	1
	9	12593	Dolomite handles smooth Futura/Maxi/Alpha/Symph.	1
	10	12545	Dolomite Legacy zitting opklapbaar incl.bev.mat.	1
	11	12656	Dolomite vergrend.slot Symph./Futura/Amigo/Maxi	1
	12	12687	(Handle attachment for folding hinge, pair)	1
	15	13509-R	Dolomite set dabsII incl.grip/snoer re PS	1
	15	13509-L	Dolomite set dabsII incl.grip/snoer li PS	1
	17	12620	Dolomite scharnier ps Symphony/Maxi/HP/Futura	1
	6	1452283	Dolomite Legacy remkabel binnen 10 stuks	1
	11	1452288	(Folding lock red 10 pcs)	1
	13	SP1584459	(Locking knob 10-pack (Futura/Symphony))	1
	14	1510376	(Folding mechanism kit) <i>Replaces 12622 and 12647-S</i>	1
	16	1529859	Dolomite Jazz handvatafdekkdopjes set van 20 <i>Replaces 70246</i>	1
	18	1529858	(Spring for Foldinghandle 10 pcs) <i>Replaces 72025</i>	1
	19	1542524	(Adjustmentscrew with nut, 10 pcs)	1
	20	1560485	(Anatomical handle 10 pcs)	1
	21	12522	(Anatomic grip, anti-static, Pair)	1

Dolomite® Symphony |
(Accessories)



1	12538-15	Dolomite draadmand klein Legacy 450	1
1	12530-15	Dolomite mand	1
2	70311	Dolomite tray voor alle Dolomite rollators	1
3	12606	Dolomite stokhouder ex.Jazz	1
4	12600	Dolomite rugsteun	1
5	12560-21	Dolomite drempeelhulp Futura/Alpha/Legacy >03/2010	1
6	12523	Dolomite boodschappentas zwart tbv.alle modellen	1
7	13041-21	Dolomite vertragsrem set (roll.na 03/03/2010)	1
8	1542479	(Screw P6SS M8X10 A2 10-pack)	1
9	12682-25	Dolomite zuurstoffleshouder <i>SYMPHONY 520/600</i>	1
10	12507-L	Dolomite eenhandsrem links Futura/Symphony	1
10	12507-R	Dolomite eenhandsrem rechts Futura/Symphony	1
11	12611-L-45	(HP-handle left) <i>SYMPHONY 450</i>	1
11	12611-L-52	(HP-handle left) <i>SYMPHONY 520</i>	1
11	12611-L-60	(HP-handle left) <i>SYMPHONY 600</i>	1
11	12611-R-45	(HP-handle right) <i>SYMPHONY 450</i>	1
11	12611-R-52	(HP-handle right) <i>SYMPHONY 520</i>	1
11	12611-R-60	(HP-handle right) <i>SYMPHONY 600</i>	1
12	12613	(Adapt handles set)	1
13	12651	Dolomite softhandgrepen Legacy	1
14	12593	Dolomite handles smooth Futura/Maxi/Alpha/Symph.	1
15	12544	Dolomite spatbeschermers Melody pp	1
16	AP1582476	(IV-POLE, TELESCOPIC, CPL)	1



Yes, you can.®



Belgium & Luxemburg:

Invacare nv, Autobaan 22, B-8210 Loppem
Tel: (32) (0)50 83 10 10, Fax: (32) (0)50 83 10 11
belgium@invacare.com / www.invacare.be

Denmark:

Invacare A/S, Sdr. Ringvej 37, DK-2605 Brøndby
Tel: (45) (0)36 90 00 00, Fax: (45) (0)36 90 00 01
denmark@invacare.com / www.invacare.dk

Deutschland:

Invacare Aquatec GmbH, Alemannenstraße 10, D-88316 Isny
Tel: (49) (0)75 62 7 00 0, Fax: (49) (0)75 62 7 00 66
info@invacare-aquatec.com / www.invacare-aquatec.de

European Distributor Organisation:

Invacare, Kleiststraße 49, D-32457 Porta Westfalica
Tel: (49) (0)57 31 754 540, Fax: (49) (0)57 31 754 541
edo@invacare.com / www.invacare.eu.com

España:

Invacare SA, c/Areny s/n, Polígon Industrial de Celrà, E-17460 Celrà (Girona)
Tel: (34) (0)972 49 32 00, Fax: (34) (0)972 49 32 20
contactsp@invacare.com / www.invacare.es

France:

Invacare Poirier SAS, Route de St Roch, F-37230 Fondettes
Tel: (33) (0)2 47 62 64 66, Fax: (33) (0)2 47 42 12 24
contactfr@invacare.com / www.invacare.fr

Ireland:

Invacare Ireland Ltd, Unit 5 Seatown Business Campus, Seatown Road, Swords, County Dublin - Ireland
Tel: (353) 1 810 7084, Fax: (353) 1 810 7085
ireland@invacare.com / www.invacare.ie

Italia:

Invacare Mecc San s.r.l., Via dei Pini 62, I-36016 Thiene (VI)
Tel: (39) 0445 38 00 59, Fax: (39) 0445 38 00 34
italia@invacare.com / www.invacare.it

Nederland:

Invacare BV, Celsiusstraat 46, NL-6716 BZ Ede
Tel: (31) (0)318 695 757, Fax: (31) (0)318 695 758
nederland@invacare.com, csede@invacare.com / www.invacare.nl

Norge:

Invacare AS, Grensesvingen 9, Postboks 6230, Etterstad, N-0603 Oslo
Tel: (47) (0)22 57 95 00, Fax: (47) (0)22 57 95 01
norway@invacare.com, island@invacare.com / www.invacare.no

Österreich:

Invacare Austria GmbH, Herzog Odilostrasse 101, A-5310 Mondsee
Tel: (43) 6232 5535 0, Fax: (43) 6232 5535 4
info-austria@invacare.com / www.invacare.at

Portugal:

Invacare Lda, Rua Estrada Velha, 949, P-4465-784 Leça do Balio
Tel: (351) (0)225 1059 46147, Fax: (351) (0)225 1057 39
portugal@invacare.com / www.invacare.pt

Sverige & Suomi:

Invacare AB, Fagerstagatan 9, S-163 91 Spånå
Tel: (46) (0)8 761 70 90, Fax: (46) (0)8 761 81 08
sweden@invacare.com, finland@invacare.com / www.invacare.se

Switzerland:

Invacare AG, Benkenstrasse 260, CH-4108 Witterswil
Tel: (41) (0)61 487 70 80, Fax: (41) (0)61 487 70 81
switzerland@invacare.com / www.invacare.ch

United Kingdom:

Invacare Limited, Pencoed Technology Park, Pencoed, Bridgend CF35 5AQ
Switchboard Tel: (44) (0)1656 776200, Fax: (44) (0)1656 776201
Customer services Tel: (44) (0)1656 776222, Fax: (44) (0)1656 776220
uk@invacare.com / www.invacare.co.uk